

-LA FUNZIONE DI POLIGONATURA/DENTATURA DEVE ESSERE INSTALLATA SULLA MACCHINA
 -POLYGON CUTTING/GEAR HOBBING FUNCTION MUST BE INSTALLED ON THE MACHINE
 -DIE FUNKTION FÜR POLYGON-BZW. VERZÄHNUNGSFRÄSEN MUSS AUF DER MASCHINE FREIGESCHALTET WERDEN

DOTAZIONI - SUPPLIED WITH - AUSSTATTUNG

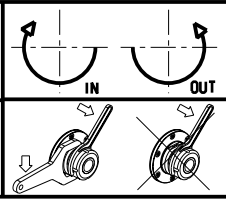
- N°1 ALBERO + DISTANZIALI
- N°1 SHAFT + SPACER
- N°1 DORN + ABSTANDSSTUECK

PER ALBERI E DISTANZIALI VEDI PAG. TBL250-1-00
 FOR SHAFT END SPACER SEE PAGE TBL250-1-00
 FUER DORN UND ABSTANDSSTUECK SEITE TBL250-1-00

| Cod. MT | | i | RPM max | Coppia Max Max Torque Max Drehmoment | Lubrificazione est. Ext. coolant Aussenkuehlung | D (mm) | D (Inch) | CHIAVI INCLUSE Keys included Schluessel inbegriffen | | |
|--|--|-----|------------|--|---|-------------|----------------|---|---------|----------------------|
| versione dx right version version rechts | versione sx left version version links | | | | | | | CHUB30 | CHESL08 | CHUB24 (Ø16 / Ø3/4") |
| SAU1001100 | SAU1001110 | 1:1 | 6000 | 90Nm | X | 16-22-27-32 | 3/4"-1"-1 1/4" | CHUB30 | CHESL08 | CHUB24 (Ø16 / Ø3/4") |
| SAU1002100 | SAU1002110 | 2:1 | 3000 | 110Nm | X | 16-22-27-32 | 3/4"-1"-1 1/4" | CHUB30 | CHESL08 | CHUB24 (Ø16 / Ø3/4") |

SAUTER
VD150

MODULO MOTORIZZATO PORTACREATORE MAGGIORATO VD150 DIN5480
 Reinforced driven gear hobber VD150 DIN5480
 Angetriebenes Zahnradwaelzfraes-Werkzeug vergroessert VD150 DIN5480



M.T. srl
 Via Casino Albini 480
 Tel. 0541/956034-957884
 Fax 0541/956341
 47842 S. GIOVANNI IN M. (RN)
 e-mail: mtma@mtmarchetti.com
 http://www.mtmarchetti.com



SAU340-4-65

Subject to change without notice.